

# Весна священна

## Première Partie: L'Adoration de la Terre

90208

Lento ♩ = 50 tempo rubato  
solo ad lib

### Introduction

Igor Stravinsky  
red. version J. McPhee

1

poco accelerando

in tempo

2

3

in tempo

3

Più mosso ♩ = 66

*p*

5

*poco più f*

3

3

3

3

3

12 Tempo I ♩ = 50  
solo

(come sopra)

5

4

# Шехерезада

II

Lento  
Recit. 3

Andantino  
capriccioso, quasi recitando

Solo  
ad lib

V-no Solo Cad. dolce espressivo

rit. assai  
a tempo

10

*pp*



# Mexepezaga.

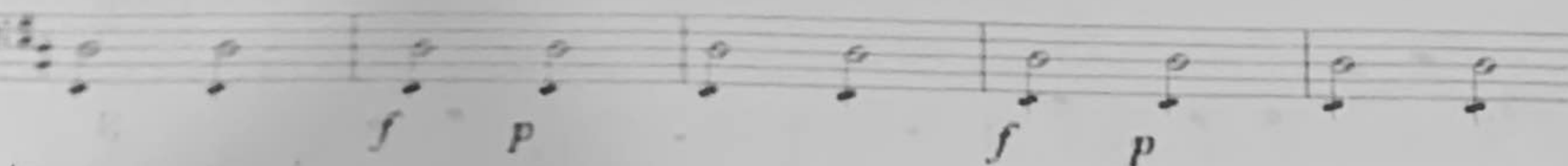
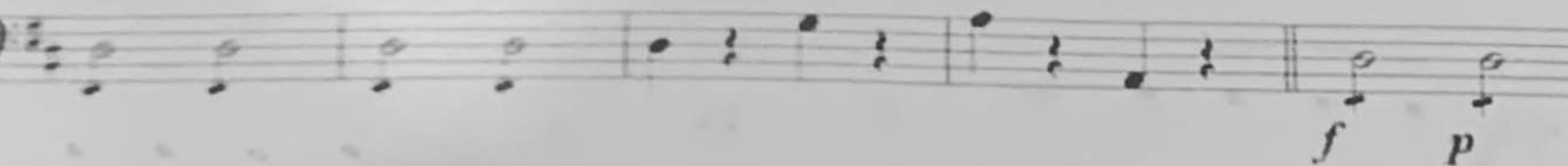
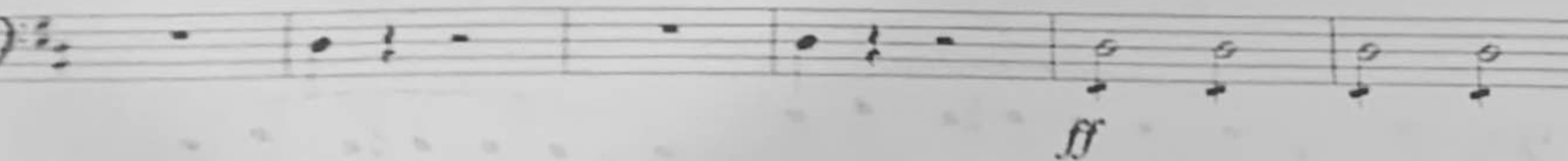
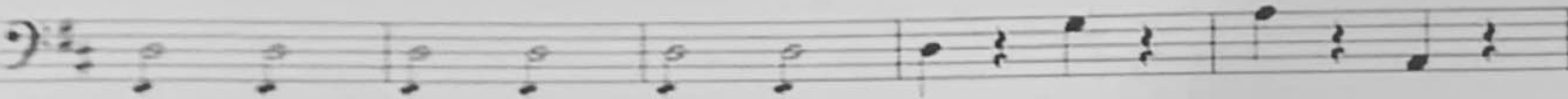
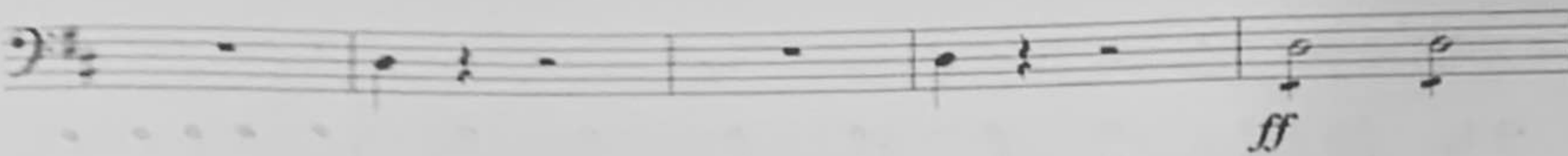
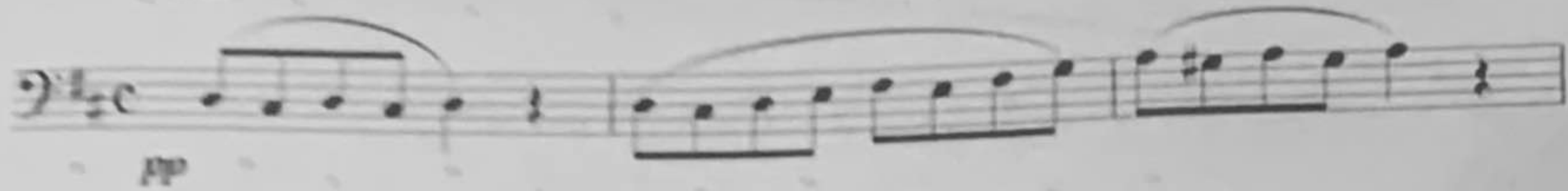
Musical score for three staves, likely for a string instrument. The score includes the following performance instructions:

- Staff 1:** Moderato assai, Lento Solo, accel., poco rit., a tempo.
- Staff 2:** Lento, accel., poco rit., a tempo.
- Staff 3:** Lento, accel., rit. molto, ten.

Dynamic markings include *f*, *lunga p cresc.*, and *p cresc.*. The notation features a series of sixteenth notes in the right hand and a bass line in the left hand. A fermata is present over the first measure of each staff.

# Весілля Пізаро

Presto





Handwritten musical notation on a single staff in bass clef, 4/4 time. It begins with a forte (*f*) dynamic marking. The melody consists of a series of eighth notes ascending from G2 to B2, followed by a quarter note A2, a quarter note G2, and a quarter note F2.

Handwritten musical notation on a single staff in bass clef, 4/4 time. The melody continues with quarter notes: E2, D2, C2, B1, A1, G1, F1, E1.

Handwritten musical notation on a single staff in bass clef, 4/4 time. The melody continues with quarter notes: D1, C1, B0, A0, G0, F0, E0, D0.

Handwritten musical notation on a single staff in bass clef, 4/4 time. The melody continues with quarter notes: C0, B0, A0, G0, F0, E0, D0, C0.

Handwritten musical notation on a single staff in bass clef, 4/4 time. It features a handwritten box containing the letters "A" and "B". The notation includes a whole note G1 with a fermata, followed by a whole rest, then a whole note F1 with a fermata. Above the first whole note is a handwritten "7" and above the second is a handwritten "6". The dynamic marking *p* (piano) appears below the staff.

Handwritten musical notation on a single staff in bass clef, 4/4 time. It features a whole note G1 with a fermata, followed by a whole rest, then a whole note F1 with a fermata. The dynamic marking *f* (forte) appears below the staff.

Handwritten musical notation on a single staff in bass clef, 4/4 time. The melody continues with quarter notes: E1, D1, C1, B0, A0, G0, F0, E0. The dynamic marking *f* (forte) appears below the staff.

Handwritten musical notation on a single staff in bass clef, 4/4 time. The melody continues with quarter notes: D0, C0, B0, A0, G0, F0, E0, D0. The dynamic marking *f* (forte) appears below the staff.

Handwritten musical notation on a single staff in bass clef, 4/4 time. The melody continues with quarter notes: C0, B0, A0, G0, F0, E0, D0, C0. The dynamic marking *f* (forte) appears below the staff.

Handwritten musical notation on a single staff in bass clef, 4/4 time. It features a whole note G1 with a fermata, followed by a whole rest, then a whole note F1 with a fermata. Above the first whole note is a handwritten "13". The dynamic marking *p* (piano) appears below the staff.



123





# КАРМІНА БУРАНА

Solo

4/4 12

*p*

*rit.*

*3/8* *rit. sf* **90.**

# ЛЮБОВНИЙ НАПІЙ

## N° 11

### LARGHETTO

FAGOTTO 1°

FAGOTTO 2°

*p Solo*

*cres. calando*

**67**

**4**